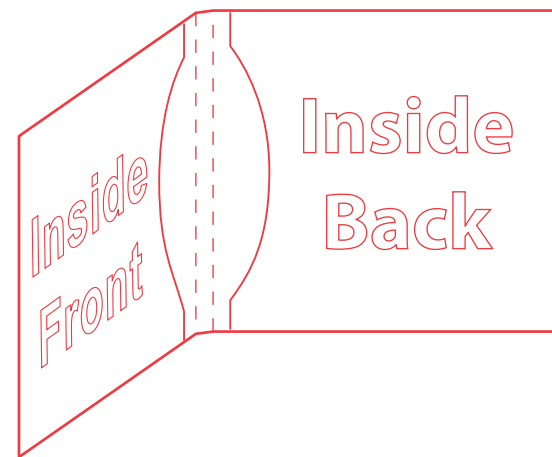


Inside Back Cover

Back Cover

Front Cover

- Type safety
- Cut Line
- Bleed Area



4 Panel Cardboard Sleeve Mailer with 2 Pocket

Finished Size: 5" x 5" x 0.1867"

CDM-408 SLEEVE4P-2PKT-5INCHD

Offset Digital

Inside Front Cover